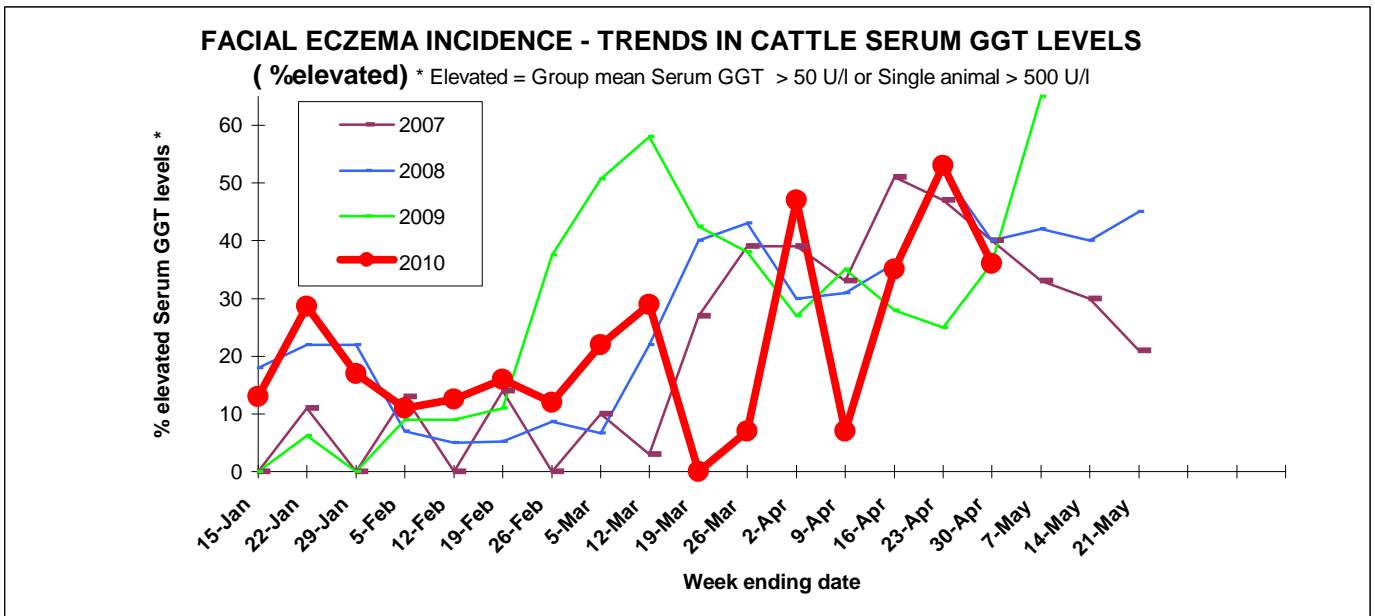
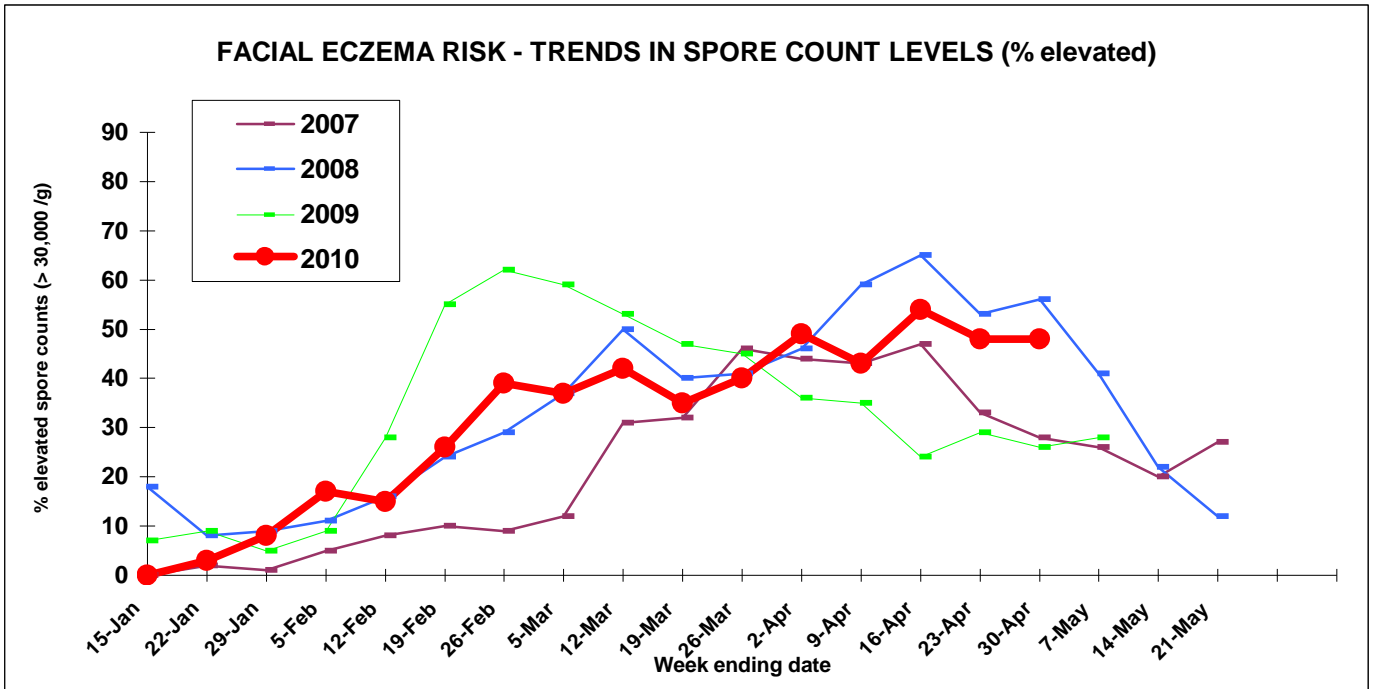


# FACIAL ECZEMA RISK AND INCIDENCE MONITOR NO 16



30-Apr-10



Spore counts continue to be elevated in hotspots around the Waikato, BOP, Northland, and Taranaki regions. Kaikohe has had the first significant rainfall (30-50mm) since October 2009. Clinical signs in stock have been reported in the Waihi area. Keep precautions in place in prone areas at this stage until spore counts decline.

Please send counts for the report by 2pm Fridays. Fax 07 850 0770. E-mail [fe@gribbles.co.nz](mailto:fe@gribbles.co.nz)  
Report compiled by Gribbles Veterinary.

# DISTRICT SPORE COUNTS AS AT

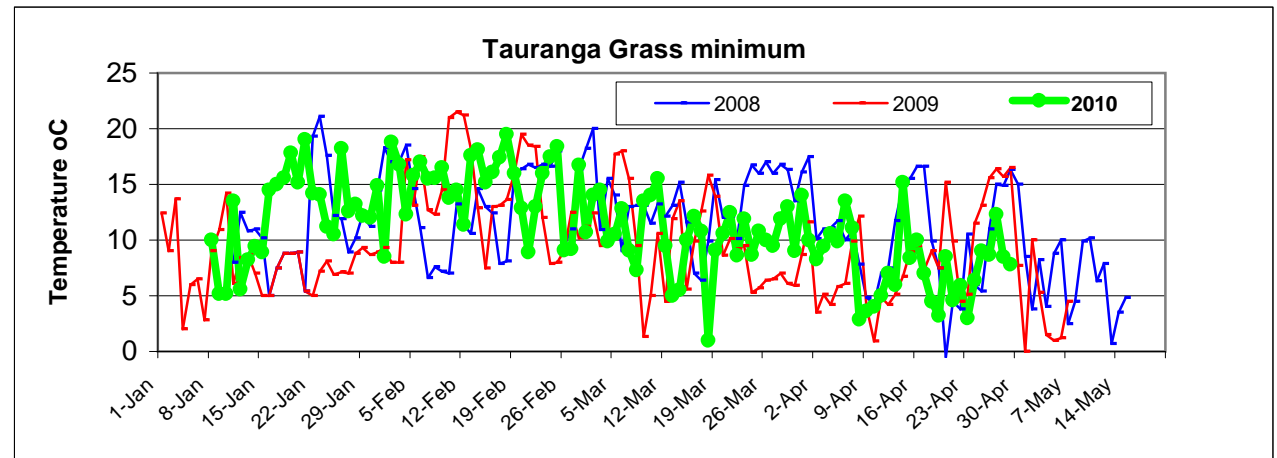
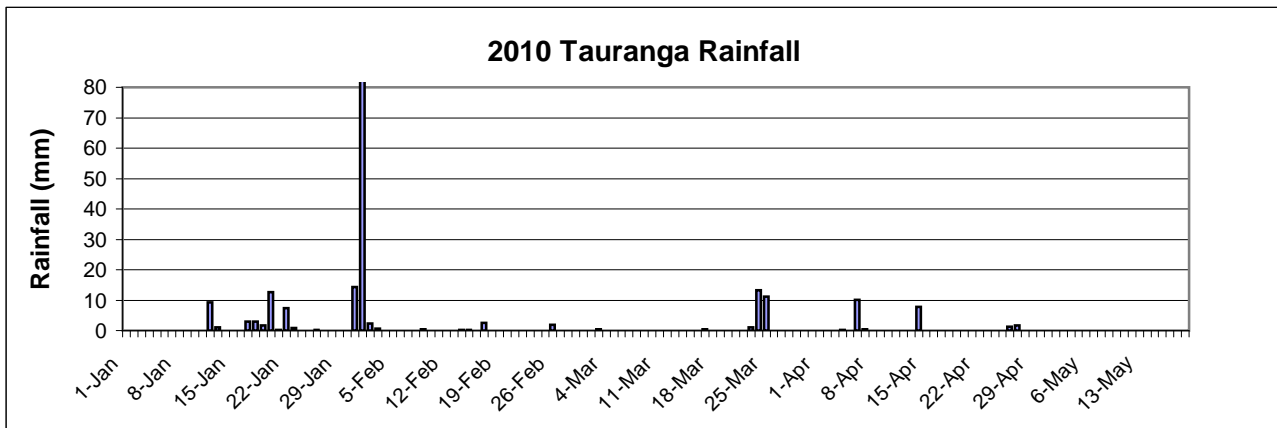
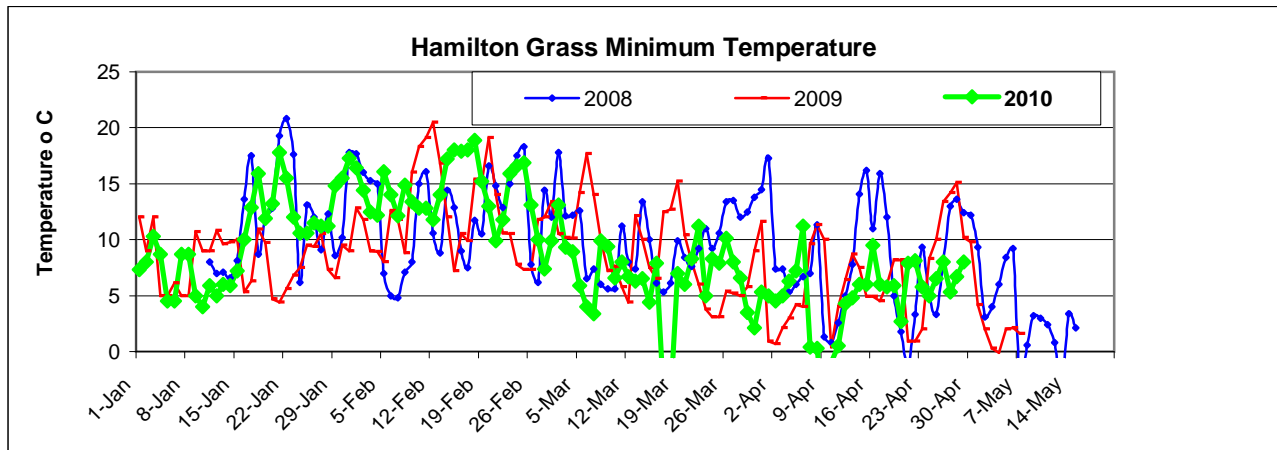
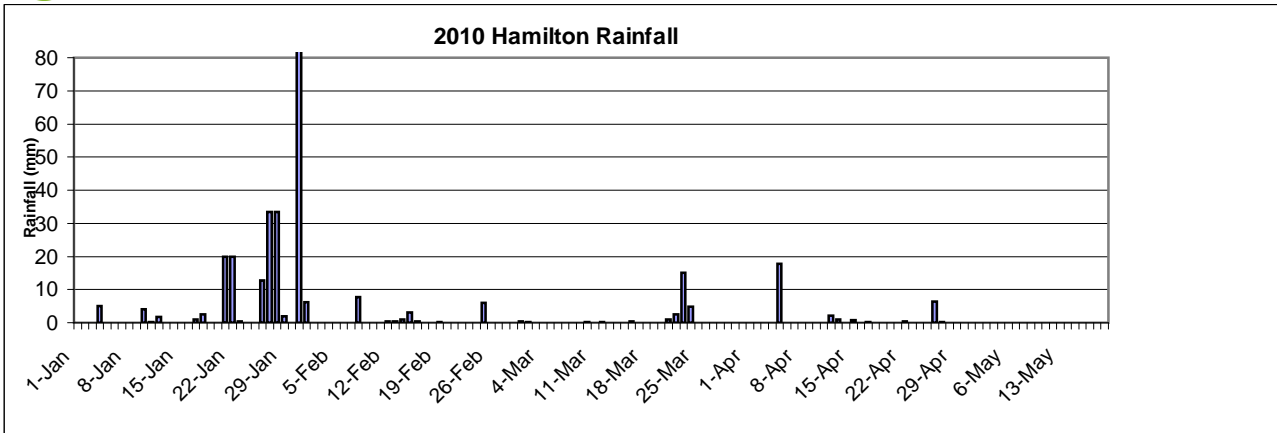
30-Apr-10

Region	District	No of Sites Monitored	Counts for week '000's/g			FE Risk *
			Ave	Lowest	Highest	
Northland	Kaitaia	0				
	Kaikohe/BOIs.	3	23	15	30	Slight
	Whangarei	0				
	Dargaville/Ruawai	0				
	Maungaturoto	2	145	80	210	High
	Rodney	3	12	10	15	Low
Auckland	Franklin	3	177	110	275	High
B.O.P	Tauranga	0				
	Te Puke	10	99	20	310	High
	Whakatane	1	10	10	10	
	Opotiki	5	49	10	90	Moderate
	Rotorua	0				
Waikato	Whitianga	0				
	Waihi	0				
	Hauraki Plains	3	147	10	400	High
	Piako	3	149	70	244	High
	Matamata	2	230	230	230	High
	South Waikato	2	48	25	70	Moderate
	Raglan	5	104	35	185	High
	Hamilton	8	52	10	100	Moderate
	Waipa	14	56	5	250	Moderate
	Otorohanga	7	51	10	160	Moderate
	Waitomo	1	180	180	180	
	Taupo	6	6	0	15	Low
	Taranaki	New Plymouth	12	73	0	240
Stratford		4	35	5	80	Moderate
South Taranaki		4	46	25	75	Moderate
E. Coast	Gisborne	3	34	20	49	Moderate
	Hawkes Bay	3	4	3	5	Low
	Wairoa	3	23	18	30	Slight
Lower N.I	Wanganui	0				
	Rangitikei	6	16	7	38	Slight
	Manawatu	10	16	0	65	Slight
	Horowhenua	6	38	16	90	Moderate
	Tararua	3	29	23	39	Slight
	Wairarapa	1	10	10	10	
South Is	Tasman	0				

\* Risk level based on average count (<= 15 low , 15 - 30 slight, 30-60 moderate, > 60 High )

Data provided by Opotiki VS, Anexa Total VS Raglan/Gordonton, Inglewood VS, Cambridge VS, Eltham District VS, New Plymouth Vet Grp, Southern Rangitikei VS, Te Puke VC, Paeroa VS, VC Morrinsville, Matamata VS, Totally VS Fielding, The VC Otorohanga/Putaruru/Te Awamutu, VHC Whakatane, Helensville VS, Hauraki VS, Earl Gardner, AHC Morrinsville, Fiona Ellmers, VetEnt Te Kuiti and AsureQuality NZ. Sponsored by Agrifeeds, Dairy NZ, RD1 Ltd, Meat & Wool NZ & AsureQuality NZ.





Hamilton Data from The Waikato Times, Tauranga data from BOP Times.