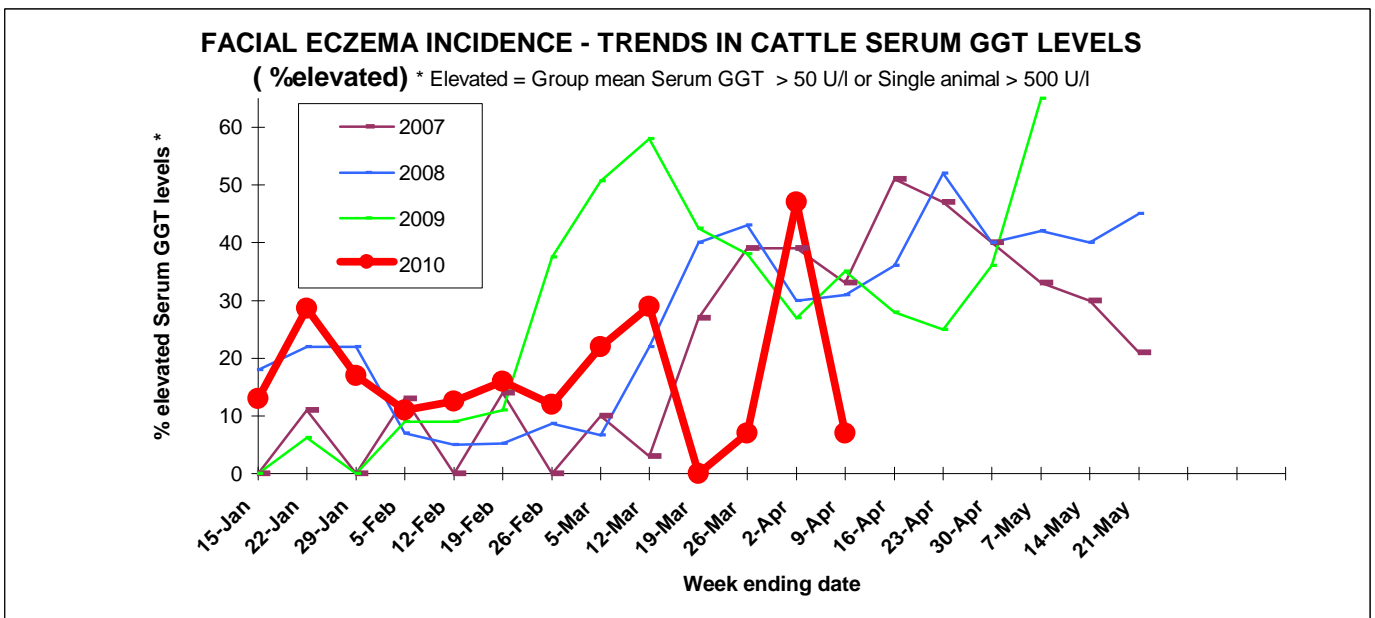
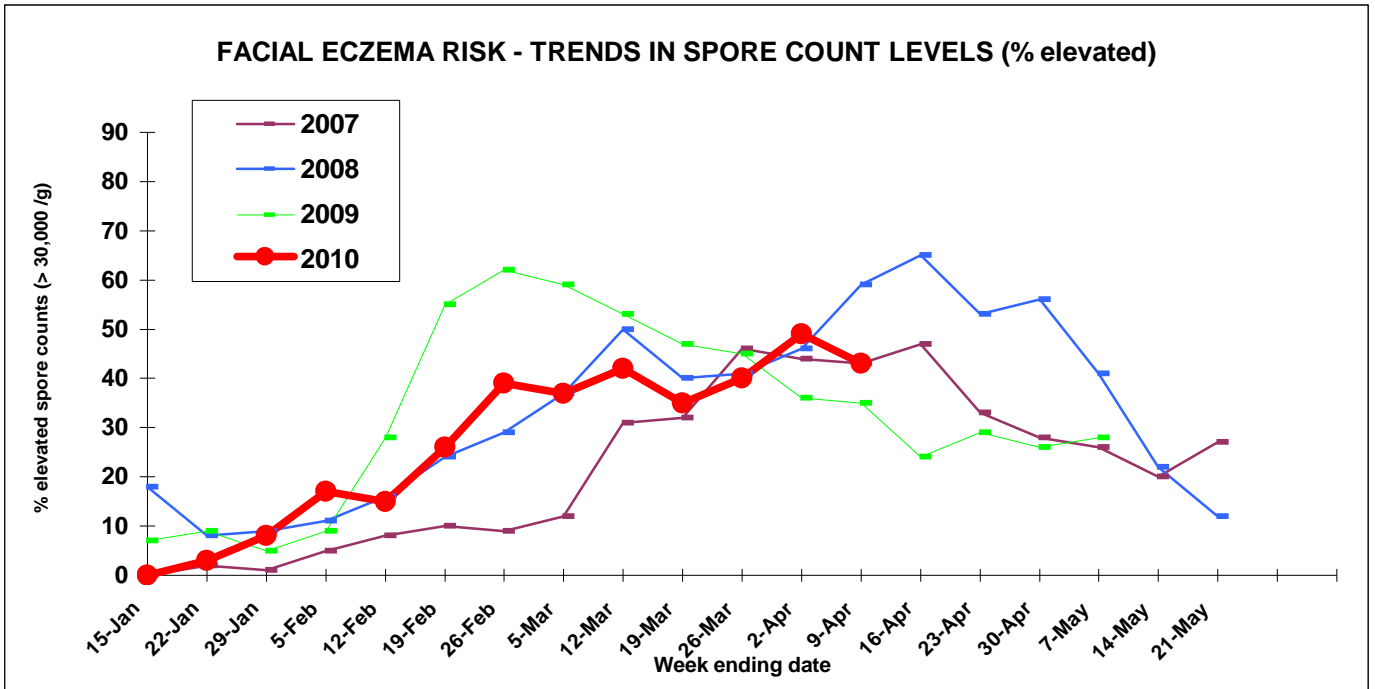


FACIAL ECZEMA RISK AND INCIDENCE MONITOR NO 13



9-Apr-10



Many areas have had some rain over this past week. Maungaturoto has had a much needed 27mm over the last 6 days which has greened the paddocks up a bit. They are experiencing moderately warm day temperatures as is the trend over a lot of the country. Frosts are also being felt. Whangarei is still experiencing drought conditions and my monitor site has no grass to sample. Gisborne, Hastings and Wairoa have the opposite problem with it being too wet to do any spore trapping this week. Counts may start to lower now but it has been reported that peaty soil could still harbour the right warm conditions for spore growth even when it is cooler.

Please send counts for the report by 1pm Fridays. Fax 07 850 0770. E-mail fe@gribbles.co.nz
Report compiled by Gribbles Veterinary.

DISTRICT SPORE COUNTS AS AT

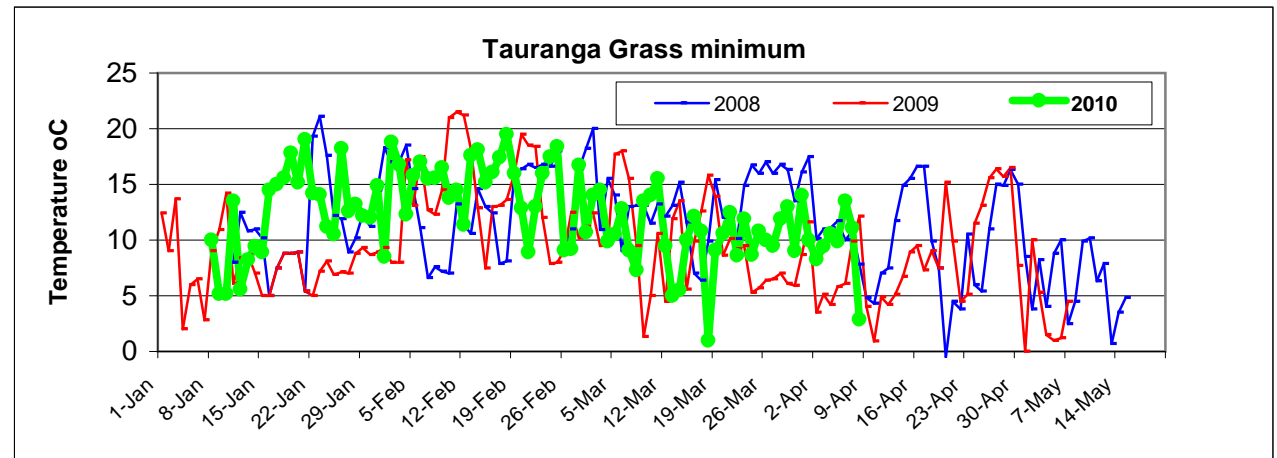
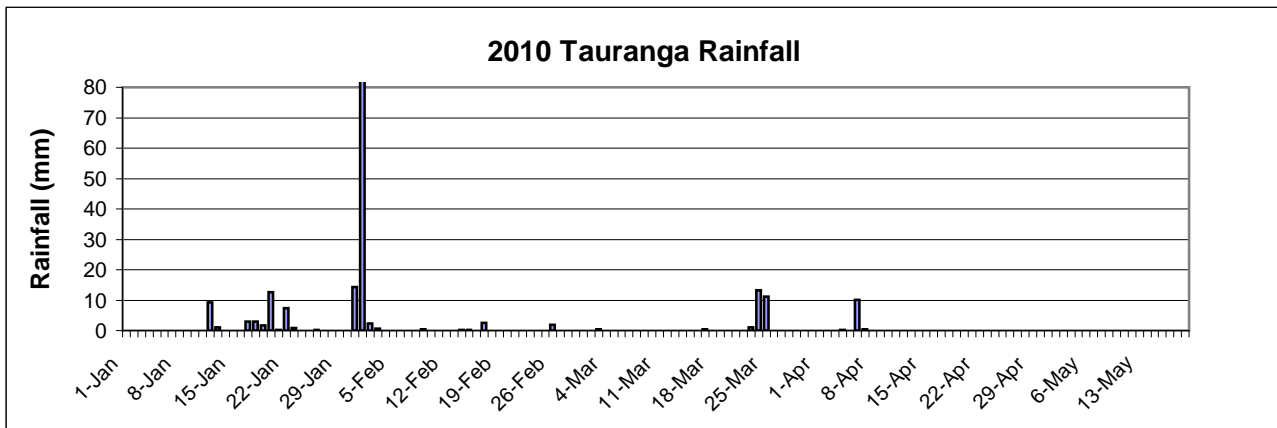
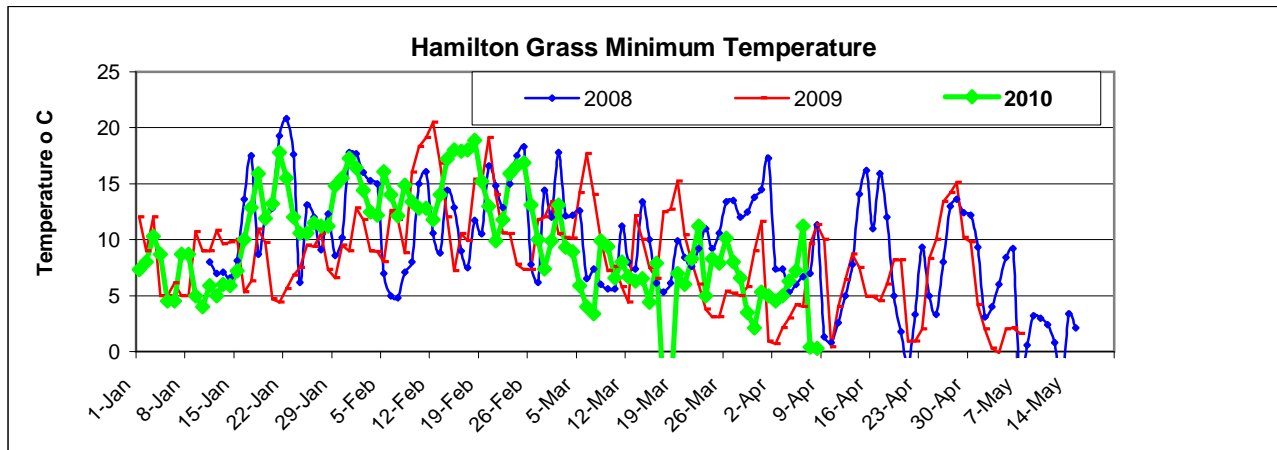
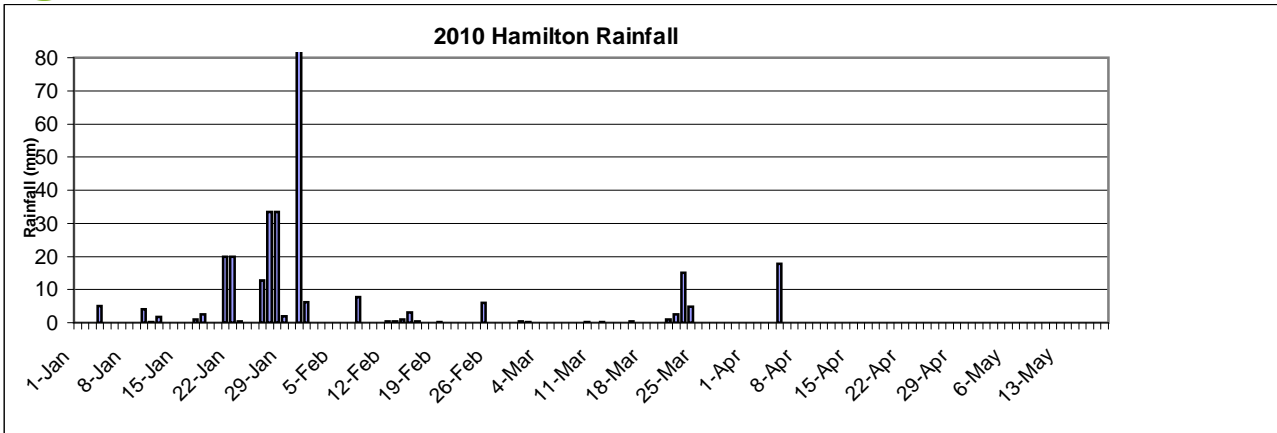
9-Apr-10

Region	District	No of Sites Monitored	Counts for week '000's/g			FE Risk *
			Ave	Lowest	Highest	
Northland	Kaitaia	0				
	Kaikohe/BOIs.	3	38	25	55	Moderate
	Whangarei	0				
	Dargaville/Ruawai	1	15	15	15	
	Maungaturoto	2	98	90	105	High
	Rodney	4	14	0	35	Low
Auckland	Franklin	3	140	105	200	High
B.O.P	Tauranga	0				
	Te Puke	5	28	5	45	Slight
	Whakatane	1	10	10	10	
	Opotiki	0				
	Rotorua	2	60	0	120	Moderate
Waikato	Whitianga	0				
	Waihi	0				
	Hauraki Plains	5	34	5	100	Moderate
	Piako	1	35	35	35	
	Matamata	4	86	10	230	High
	South Waikato	0				
	Raglan	5	50	0	100	Moderate
	Hamilton	0				
	Waipa	20	58	0	230	Moderate
	Otorohanga	7	64	25	125	High
	Waitomo	2	50	20	80	Moderate
	Taupo	6	2	0	10	Low
	Taranaki	New Plymouth	5	49	25	95
Stratford		4	40	5	70	Moderate
South Taranaki		4	39	0	145	Moderate
E. Coast	Gisborne	2	10	5	15	Low
	Hawkes Bay	0				
	Wairoa	0				
Lower N.I	Wanganui	7	19	12	43	Slight
	Rangitikei	6	12	7	18	Low
	Manawatu	7	13	0	30	Low
	Horowhenua	7	45	24	84	Moderate
	Tararua	2	32	26	37	Moderate
	Wairarapa	3	84	16	156	High
South Is	Tasman	0				

* Risk level based on average count (<= 15 low , 15 - 30 slight, 30-60 moderate, > 60 High)

Data provided by Anexa Total VS Raglan, E Gardner, Ravensdown Ltd, AHS Rotorua, Warkworth VS, Te Puke VS, VetEnt Te Kuiti, Dargaville VS, Hauraki VS, Eltham District VS, Helensville VS, VHC Whakatane, AHC Morrinsville, Inglewood VS, Matamata VS, The Vet Centre Te Awamutu/Otorohanga, Wanganui VS, Landmark VS, Totally Vets Fielding, Southern Rangitikei VS, Cambridge VS, and AsureQuality NZ. Sponsored by Agrifeeds, Dairy NZ, RD1 Ltd, & AsureQuality NZ.





Hamilton Data from The Waikato Times, Tauranga data from BOP Times.