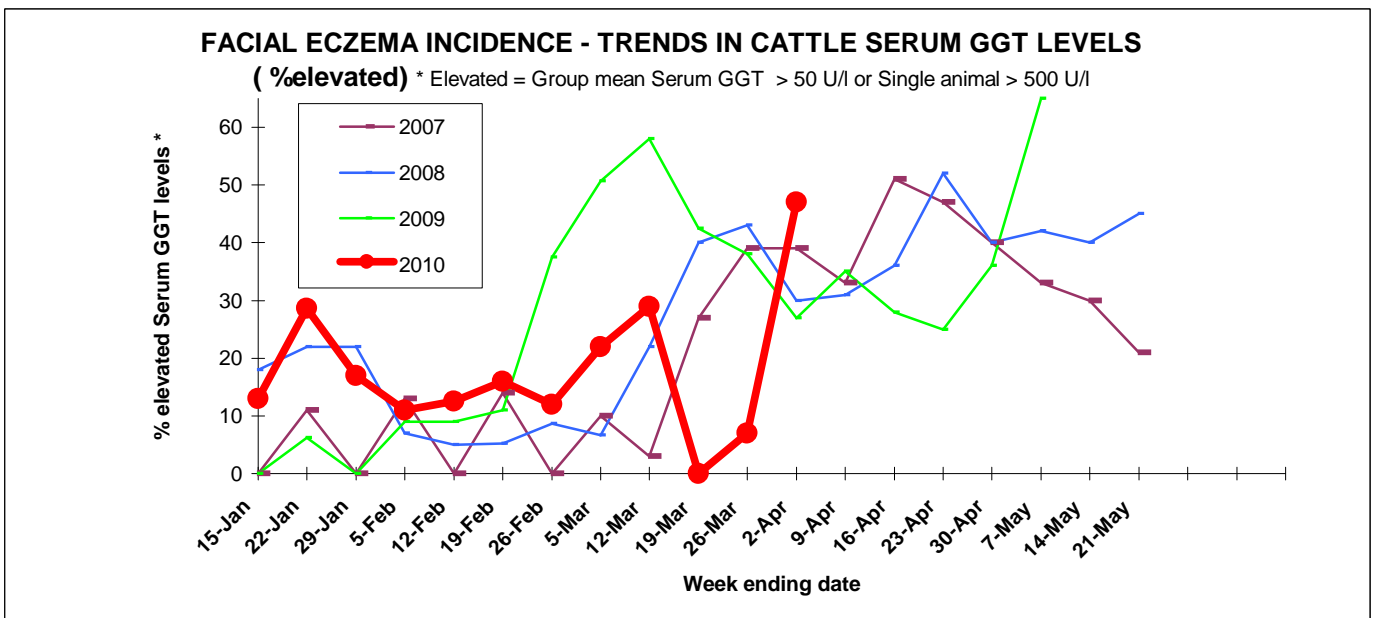
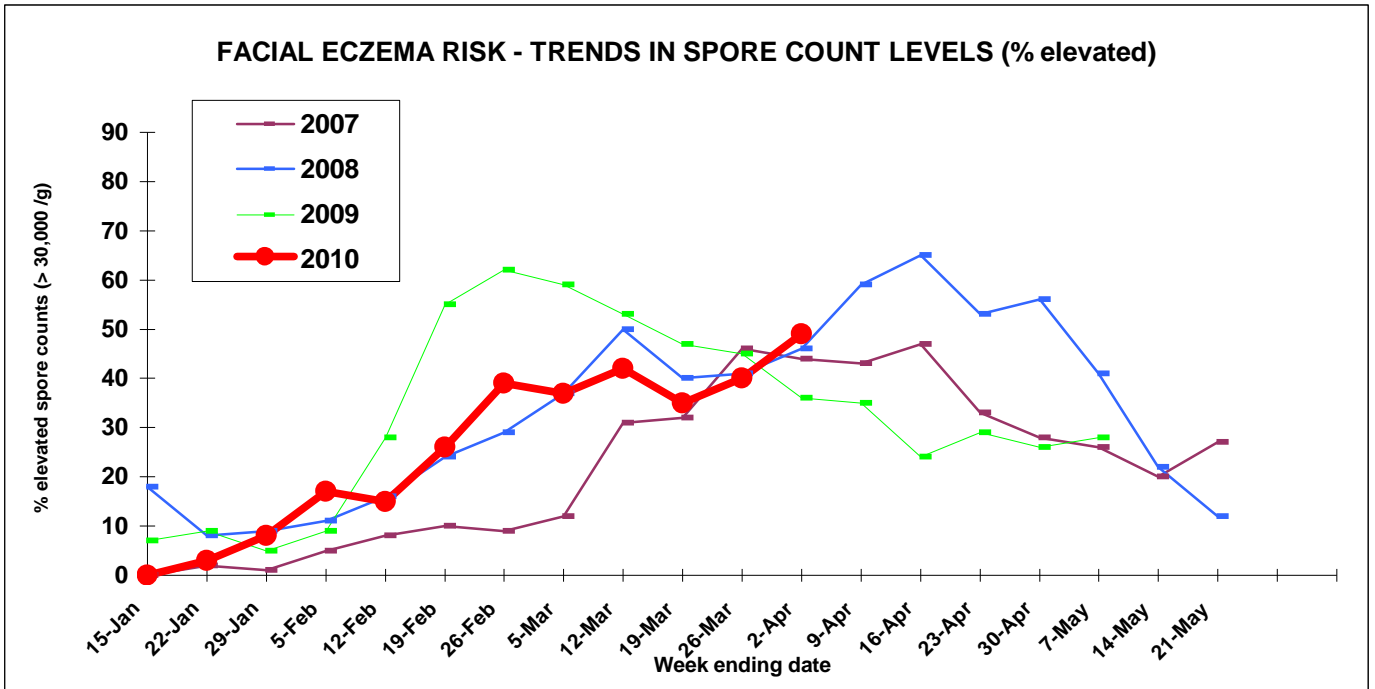


FACIAL ECZEMA RISK AND INCIDENCE MONITOR NO 12



2-Apr-10



Clinical FE is being seen in some areas - Te Awamutu, Morrinsville and in the BOP where the animal tested had been treated with Zinc. Moderately high to extremely high counts are still being reported (Rotorua, Franklin, Waikato, Taranaki & Lower NI). Some districts have no grass left to do any counts. Maungaturoto has had 5mm rain over the last week but the warm, drying winds have not helped grass growth. Warkworth has had 12.5mm rain for the whole month. Keep precautions in place but counts should start to get safer as long as the weather stays fine and we have cold mornings with low grass temperatures.

Please send counts for the report by 1pm Fridays. Fax 07 850 0770. E-mail fe@gribbles.co.nz
Report compiled by Gribbles Veterinary.

DISTRICT SPORE COUNTS AS AT

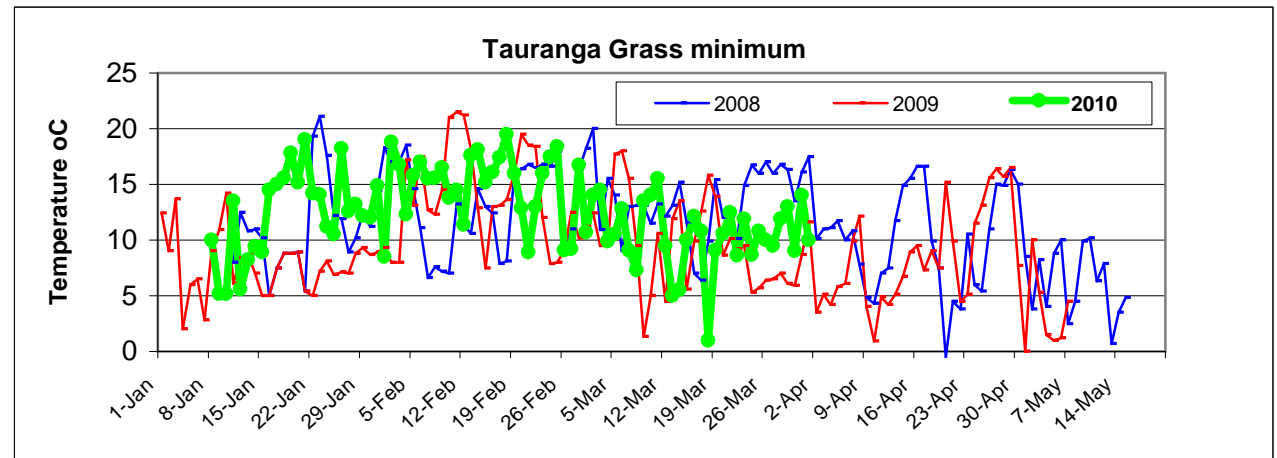
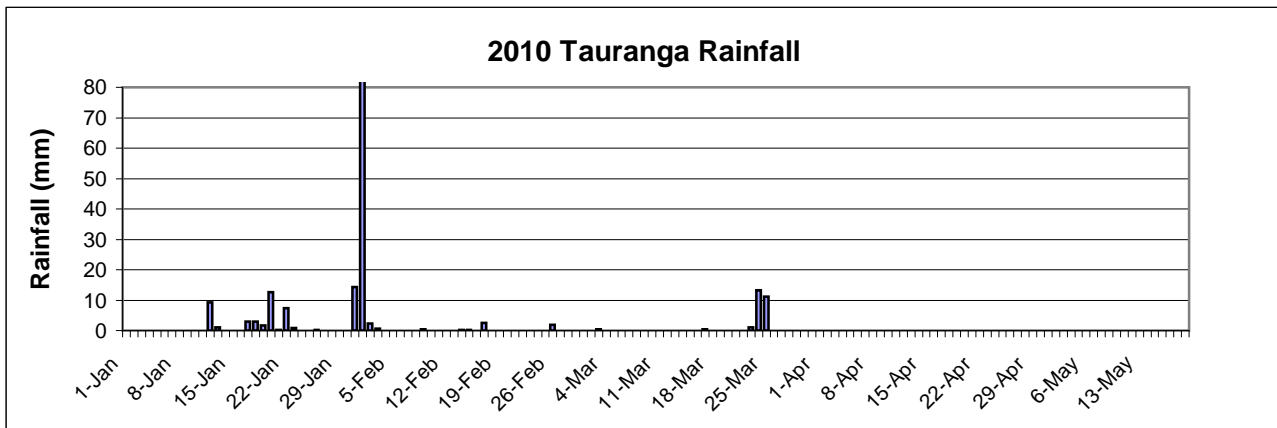
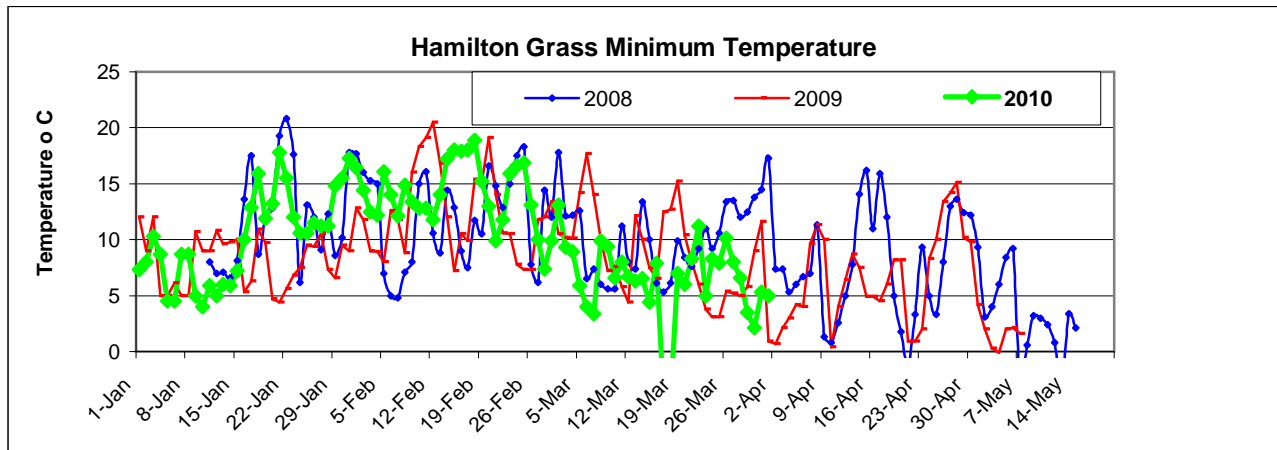
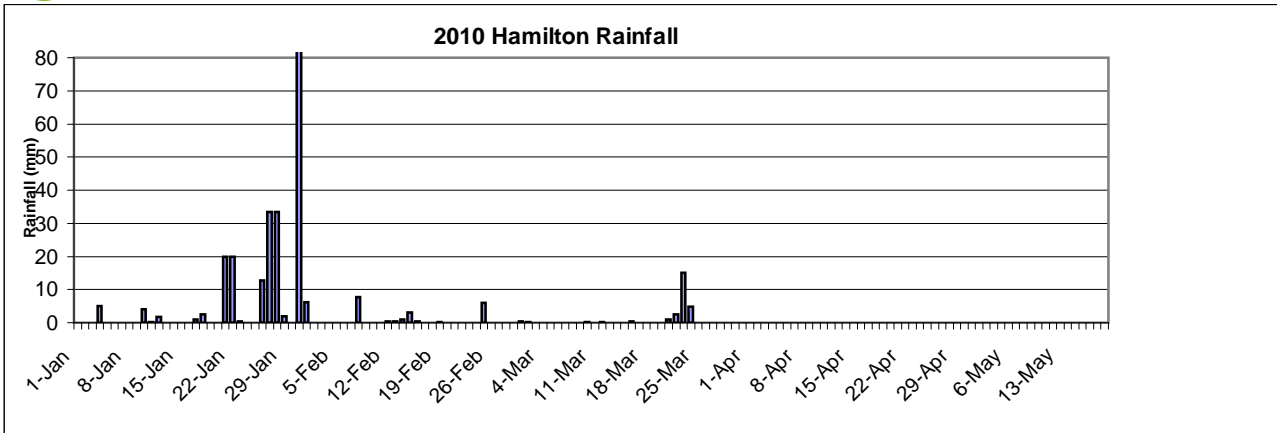
2-Apr-10

Region	District	No of Sites Monitored	Counts for week '000's/g			FE Risk *
			Ave	Lowest	Highest	
Northland	Kaitaia	0				
	Kaikohe/BOIs.	0				
	Whangarei	0				
	Dargaville/Ruawai	0				
	Maungaturoto	2	53	45	60	Moderate
	Rodney	2	3	0	5	Low
Auckland	Franklin	3	53	20	100	Moderate
B.O.P	Tauranga	0				
	Te Puke	10	32	5	70	Moderate
	Whakatane	2	53	35	70	Moderate
	Opotiki	4	14	5	20	Low
	Rotorua	2	133	5	260	High
Waikato	Whitianga	0				
	Waihi	0				
	Hauraki Plains	2	13	5	20	Low
	Piako	1	90	90	90	
	Matamata	4	88	55	120	High
	South Waikato	2	25	25	25	Slight
	Raglan	7	86	40	165	High
	Hamilton	3	129	50	200	High
	Waipa	8	104	30	275	High
	Otorohanga	9	66	5	160	High
	Waitomo	0				
	Taupo	6	3	0	10	Low
Taranaki	New Plymouth	6	38	0	90	Moderate
	Stratford	4	78	5	225	High
	South Taranaki	4	49	15	135	Moderate
E. Coast	Gisborne	0				
	Hawkes Bay	3	9	7	11	Low
	Wairoa	3	27	9	45	Slight
Lower N.I	Wanganui	7	23	13	38	Slight
	Rangitikei	6	28	9	64	Slight
	Manawatu	3	18	17	19	Slight
	Horowhenua	7	99	69	162	High
	Tararua	3	35	28	44	Moderate
	Wairarapa	3	364	234	498	High
South Is	Tasman	0				

* Risk level based on average count (<= 15 low , 15 - 30 slight, 30-60 moderate, > 60 High)

Data provided by Anexa Total VS Raglan/Huntly, New Plymouth Vet Grp, Southern Rangitikei VS, Wanganui VS, Eltham District VS, The Cow Vets Cambridge, Te Puke VC, South Waikato VS, FVC Ngatea, Opotiki VS, AHS Rotorua, Bay Vets, Hauraki VS, Fiona Ellmers, The VC Otorohanga/Te Awamutu, Cambridge VS, Matamata VS, and AsureQuality NZ. Sponsored by Agrifeeds, Dairy NZ, RD1 Ltd, & AsureQuality NZ.





Hamilton Data from The Waikato Times, Tauranga data from BOP Times.