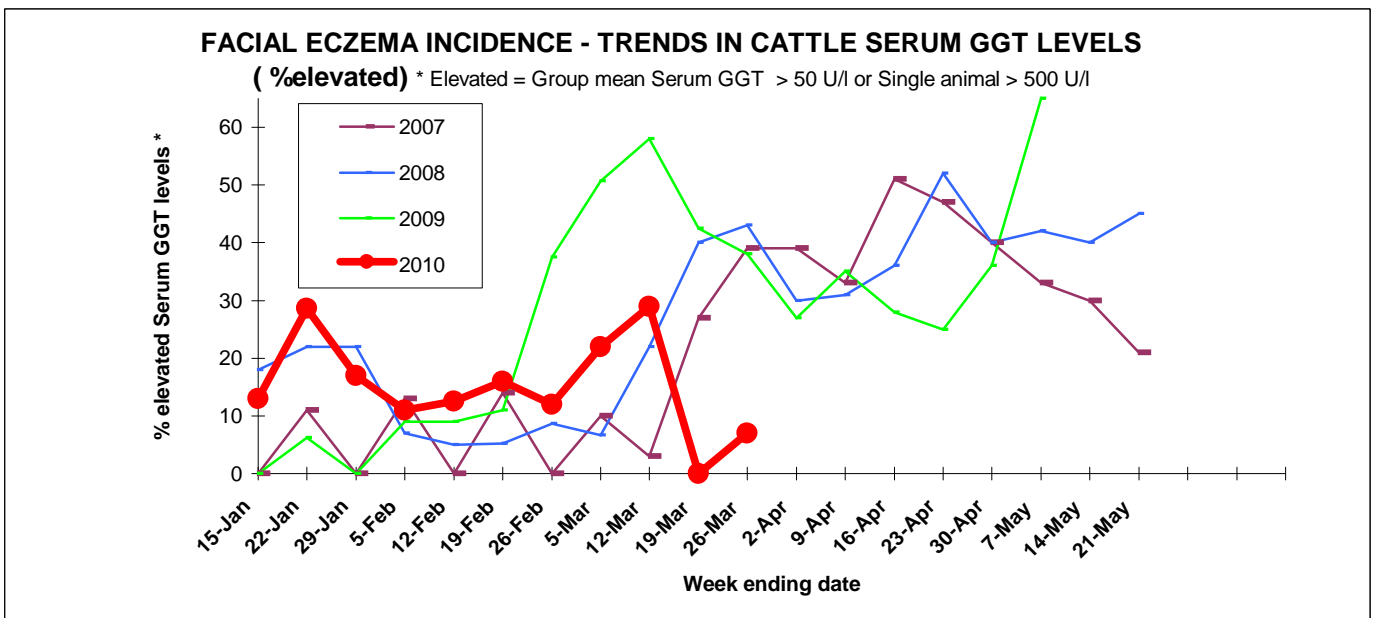
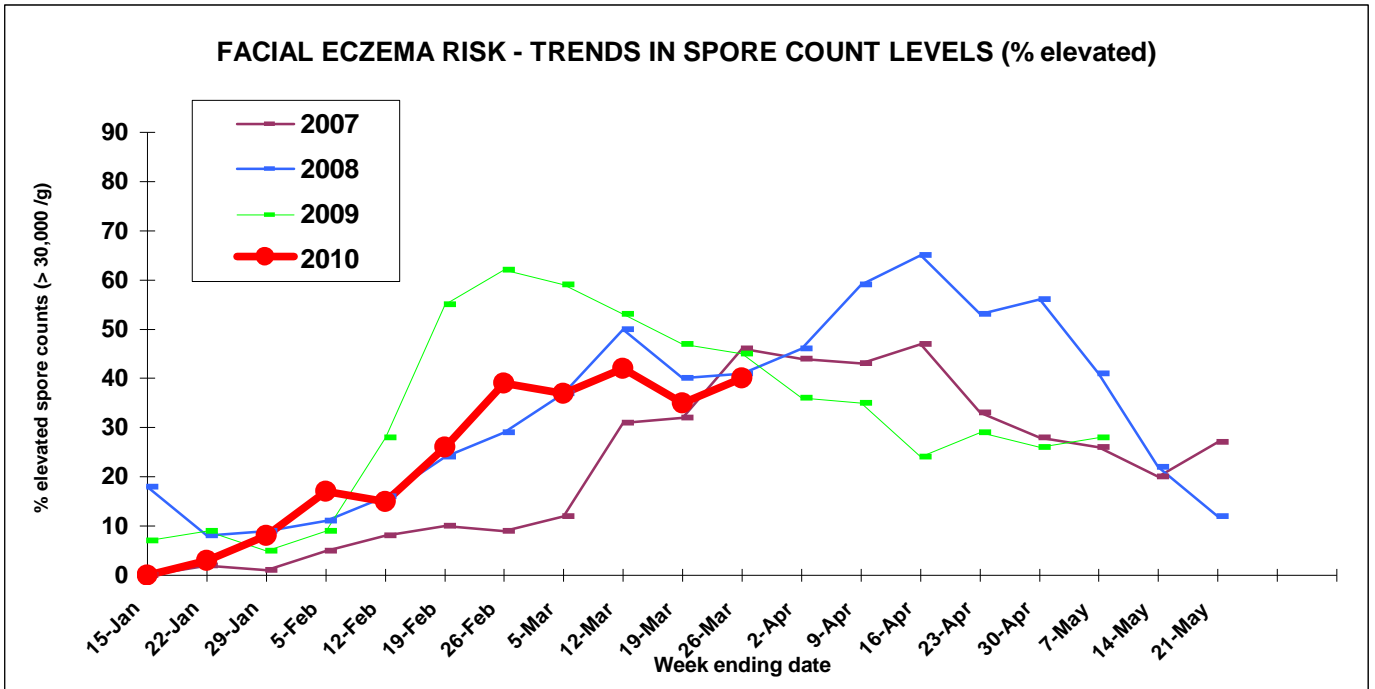


FACIAL ECZEMA RISK AND INCIDENCE MONITOR NO 11



26-Mar-10



Some areas have had decent rain fall this week but others that need it have had none. Grass minimum temperatures continue to go up and down so spore production will still be occurring and it is not safe to stop precautions yet. The trends in spore count levels graph shows similar levels at this time for the previous 3 years. Whether counts go up as in 2008 or stay relatively the same as 2007 and 2009 remains to be seen and depends entirely on weather conditions staying ideal for spore production.

Please send counts for the report by 1pm Fridays. Fax 07 850 0770. E-mail fe@gribbles.co.nz
Report compiled by Gribbles Veterinary.

DISTRICT SPORE COUNTS AS AT

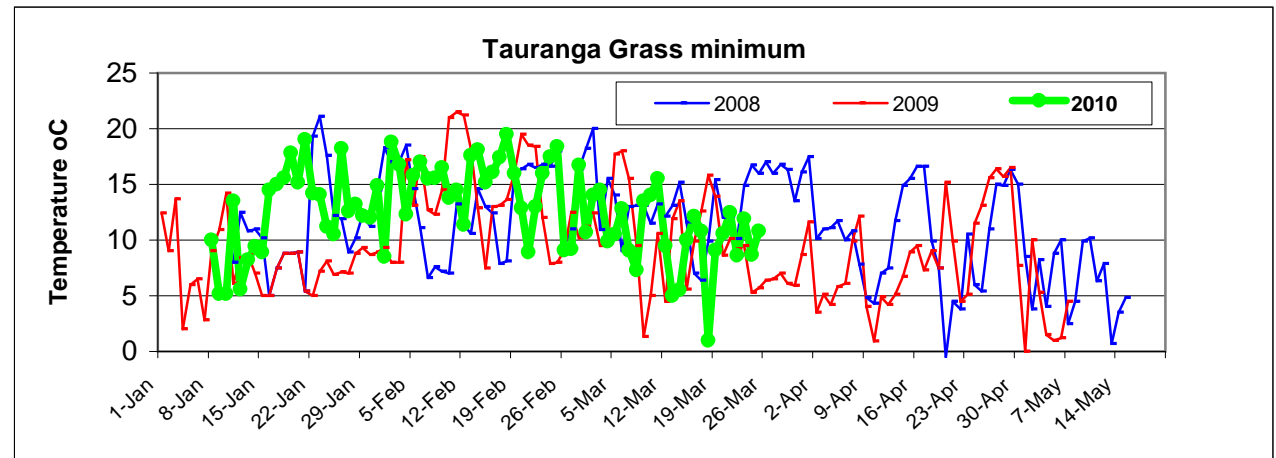
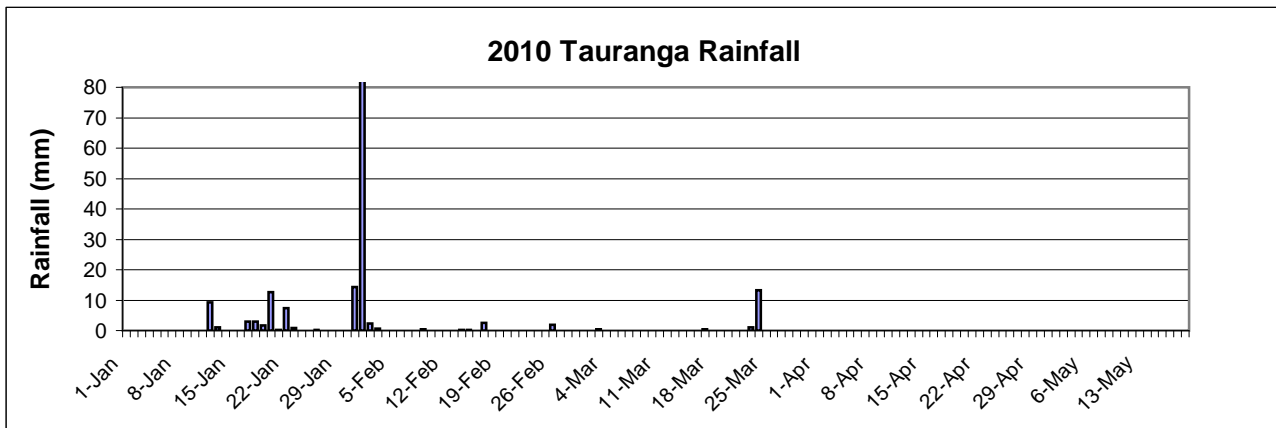
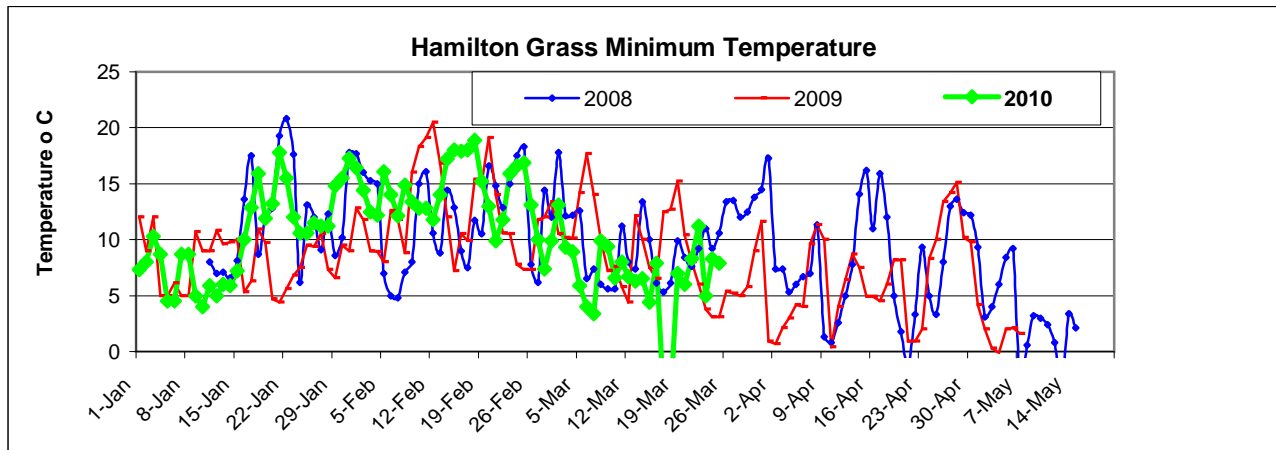
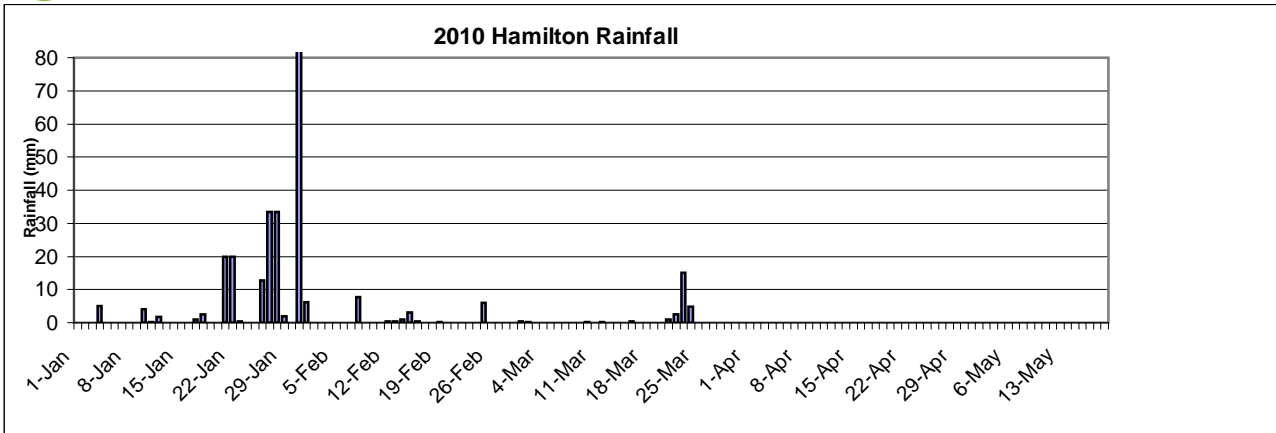
26-Mar-10

Region	District	No of Sites Monitored	Counts for week '000's/g			FE Risk *
			Ave	Lowest	Highest	
Northland	Kaitaia	2	8	0	15	Low
	Kaikohe/BOIs.	3	13	10	15	Low
	Whangarei	3	2	0	5	Low
	Dargaville/Ruawai	0				
	Maungaturoto	2	105	100	110	High
	Rodney	3	17	0	30	Slight
Auckland	Franklin	3	8	0	20	Low
B.O.P	Tauranga	0				
	Te Puke	11	8	0	30	Low
	Whakatane	8	69	20	150	High
	Opotiki	0				
	Rotorua	7	14	0	65	Low
Waikato	Whitianga	0				
	Waihi	0				
	Hauraki Plains	3	42	10	80	Moderate
	Piako	3	7	5	10	Low
	Matamata	3	38	20	55	Moderate
	South Waikato	0				
	Raglan	6	141	40	420	High
	Hamilton	10	107	10	495	High
	Waipa	14	22	10	70	Slight
	Otorohanga	8	26	0	65	Slight
	Waitomo	2	50	40	60	Moderate
	Taupo	6	5	0	10	Low
	Taranaki	New Plymouth	9	39	5	90
Stratford		4	26	0	50	Slight
South Taranaki		3	17	5	35	Slight
E. Coast	Gisborne	5	59	10	88	Moderate
	Hawkes Bay	6	7	0	16	Low
	Wairoa	3	29	14	48	Slight
Lower N.I	Wanganui	7	25	17	43	Slight
	Rangitikei	6	21	6	59	Slight
	Manawatu	7	18	5	50	Slight
	Horowhenua	7	112	36	414	High
	Tararua	5	44	27	82	Moderate
	Wairarapa	3	424	77	705	High
South Is	Tasman	0				

* Risk level based on average count (<= 15 low , 15 - 30 slight, 30-60 moderate, > 60 High)

Data provided by Bay Vets, Southern Rangitikei VS, VetEnt Te Kuiti, Cambridge VS, Helensville VS, Totally Vets Fielding, Anexa Total VS Raglan/Huntly, New Plymouth Vet Grp, Inglewood VS, Eltham District VS, Wanganui VS, FVC Ngatea, AHS Rotorua, Te Puke VS, Dairy Flat VC, Fiona Ellmers, Ravensdown Ltd, VHC Whakatane, The VC Te Awamutu/Otorohanga, AHC Morrinsville, VC Rotorua/Reporoa, Top Vets Kaitaia, Carlyle VC, Matamata VS, and AsureQuality NZ. Sponsored by Agrifeeds, Dairy NZ, RD1 Ltd, & AsureQuality NZ.





Hamilton Data from The Waikato Times, Tauranga data from BOP Times.